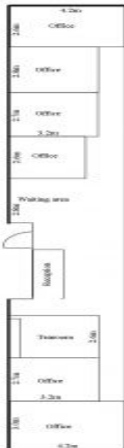




or, 124 Ryrie Street

Floor Area  
116m<sup>2</sup>



## Geelong, VIC 3/124 Ryrie Street

GARTLAND  
PROPERTY

Located above the Leaf Tea Shop in Ryrie Street  
Comprises of up to 6 office suites, reception & waiting area  
Large kitchen /tearoom  
Public car park at the rear  
Floor Area: 116m<sup>2</sup> approx  
Zone: Activity Centre 1

**LEASED**  
**Contact:** Michael De Stefano  
0401 444 118  
**Type:** Retail  
<https://www.gartland.com.au>