



## Herne Hill, VIC

Shop 2, 219A Church Street

**GARTLAND**  
PROPERTY

This retail space faces onto Church Street and is part of the Minerva Road shopping strip. With great exposure and being close to a number of schools, this shop would suit many businesses.

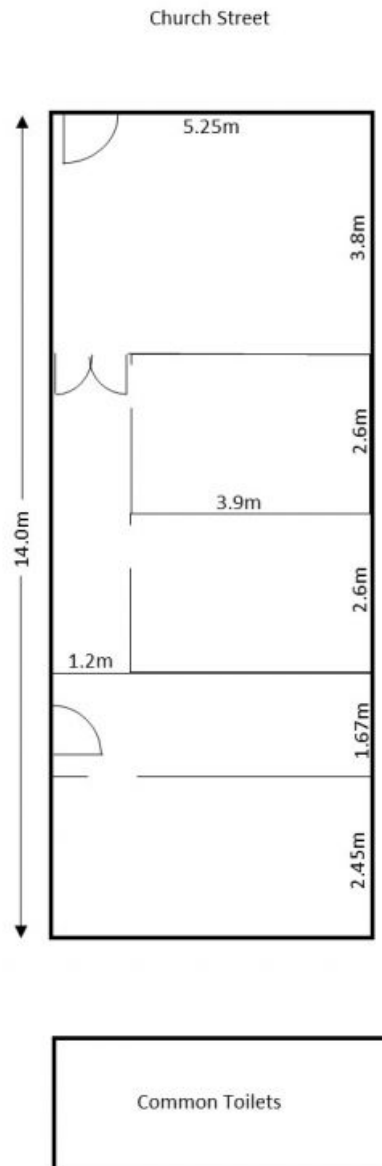
- \* Floor area: 75m<sup>2</sup> approx
- \* Retail area with rear storage/tea room
- \* Ample client parking close by
- \* Good window frontage
- \* Zoned: Commercial 1
- \* Available now

### LEASED

**Contact:** Adam Farrell  
0439 309 928

**Type:** Retail  
<https://www.gartland.com.au>

# Shop 2, 219A Church Street Herne Hill



Plan is not to scale

Measurements are approximate only

Plans shown are only indicative of layout. Dimensions are approximate.

**Herne Hill, VIC**  
Shop 2, 219A Church Street