

Geelong, VIC

2/171-181 Moorabool Street

Fantastic little space in the CBD with great window display that would suit office or retail. Located at the front of Belcher Arcade, it has great passing traffic and on-street parking for customers.

- Building area: 50m2 (approx.)
- Currently used as an office
- Surrounded by excellent businesses
- Located close to the Telstra Shop
- Excellent signage potential
- Small kitchenette & tea room area
- Zone: Activity Centre
- Available Now

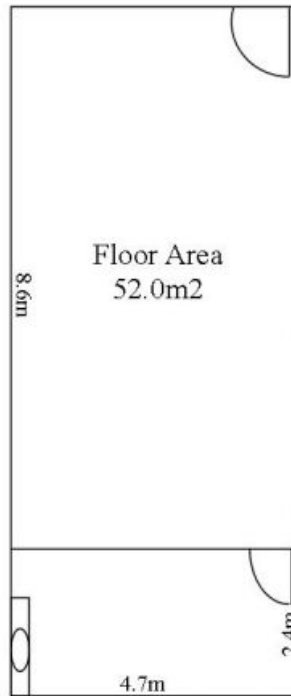
LEASED

Contact: Adam Farrell
0439 309 928
Type: Retail
<https://www.gartland.com.au>

GARTLAND
PROPERTY

2/171-181 Moorabool Street Geelong

← Moorabool Street →



Plan is not to scale
Measurements are approximate only

Plans shown are only indicative of layout. Dimensions are approximate.

Geelong, VIC
2/171-181 Moorabool Street