



North Geelong, VIC

9 Edols Street

GARTLAND
PROPERTY

An outstanding opportunity to secure a Lease in this fantastic complex, on offer is an excellent location with plenty of car parking and your own Cafe/Kiosk at the front of the complex. On offer is a large Warehouse with roller door, showroom offices and staff amenities with excellent bathroom and toilet facilities.

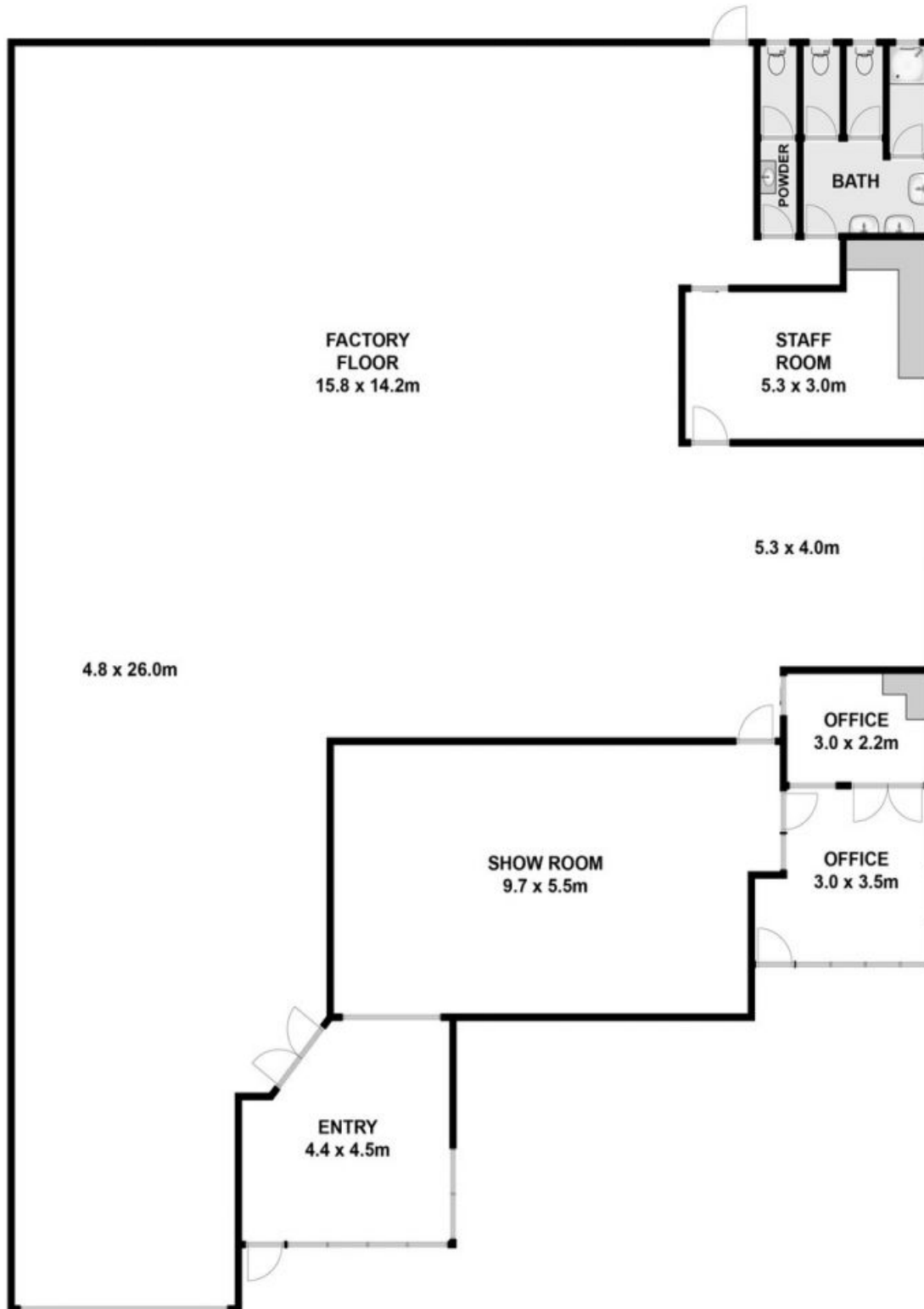
Property consists of;

- * Building area: 440m2 approx
- * Great location
- * Showroom plus office space
- * Roller Door
- * Kitchen & meals area
- * Toilets plus shower

LEASED

Contact: Adam Farrell
0439 309 928

Type: Industrial
<https://www.gartland.com.au>



Approx House Area 438m²

While [barrm.com.au](http://www.barrm.com.au) has made every attempt to ensure the accuracy of the floor plan contained here, measurements are approximate and no responsibility is taken for any error, omission, or mis-statement. This plan is for illustrative purposes only.



9 Edols Place, North Geelong

GARTLAND
PROPERTY

Plans shown are only indicative of layout. Dimensions are approximate.

North Geelong, VIC
9 Edols Street