



## Grovedale, VIC

27/8 Lewalan Street

**GARTLAND**  
PROPERTY

Currently leased to Unify Fitness on a 5 year lease with a further 5 year option at \$62,217.00 per annum + GST + Outgoings.  
This thriving precinct is situated in a highly sought-after location, minutes from the CBD, major arterials and at the entryway to Geelong's growth corridor, Armstrong Creek.

Property Details;  
Tenant: Unify Fitness  
5 year lease from 22/04/2019 with 5 year option  
3% annual increments market at option  
Building Area: 575m2  
Zone: Industrial 1

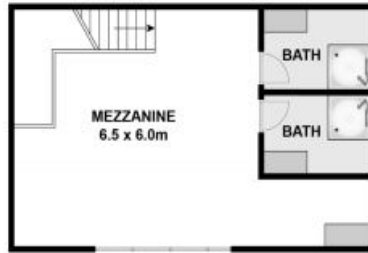
### **SOLD**

**Contact:** Michael De Stefano  
0401 444 118

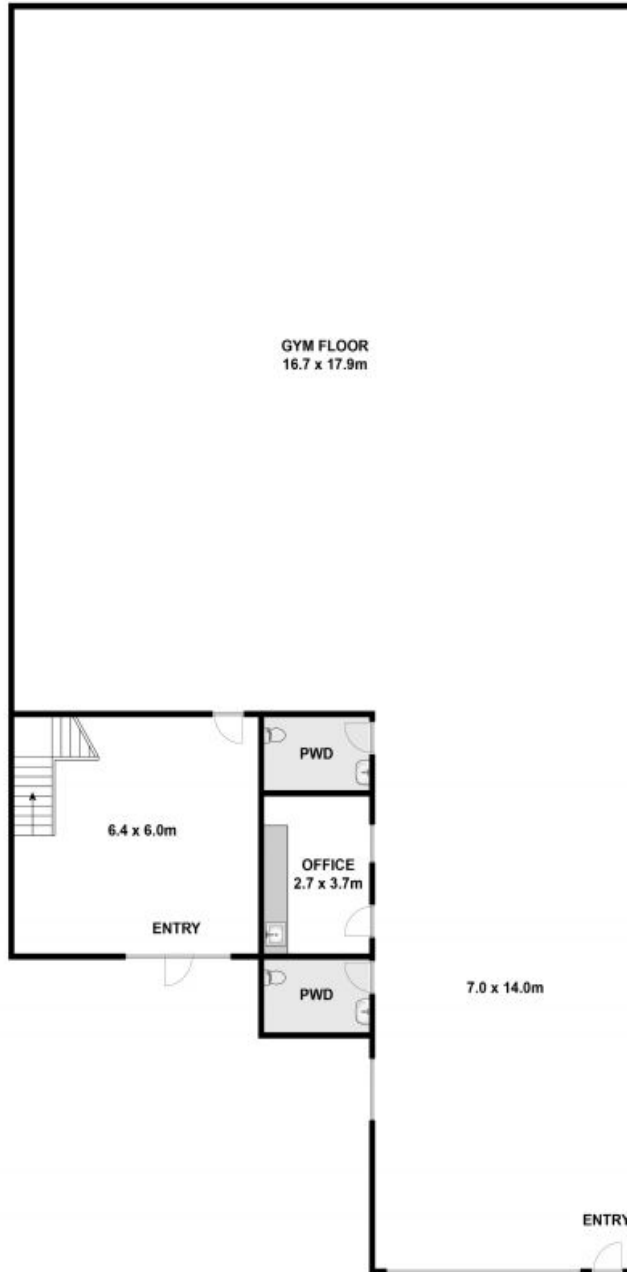
**Type:** Industrial

**Sold Date:** 02/09/2019

**<https://www.gartland.com.au>**



FISRT FLOOR



GROUND FLOOR

Approx House Area 530m<sup>2</sup>

While [barrm.com.au](http://barrm.com.au) has made every attempt to ensure the accuracy of the floor plan contained here, measurements are approximate and no responsibility is taken for any error, omission, or mis-statement. This plan is for illustrative purposes only.



**27/8 Lewalan Street, Grovedale**

**GARTLAND**  
PROPERTY

Plans shown are only indicative of layout. Dimensions are approximate.

**Grovedale, VIC**  
27/8 Lewalan Street