



## Leopold, VIC

14A Moss Road

**4**  
BED

**2**  
BATH

**GARTLAND**  
PROPERTY

This stunning family home is set on 1427sqm and offers dual street access. The spectacular entrance sets the tone for the incredible rebuild that has been undertaken. The internal finish compliments the quality of the original build which was carefully designed to maximise the generous block, and boasts the following features; timber double hung windows throughout; a prominent elevated veranda; well-established gardens & front entrance along with double gate access to the rear of the property. Internally the home is as good as brand new, offering a combination of polished timber floors and new carpet to the bedrooms & formal lounge; LED downlights throughout; extensive storage; new ducted heating and cooling; ornamental gas log fire to the formal lounge; security system; instantaneous hot water with internal temperature control panels, and it has been freshly painted throughout. Set right in the heart of the home is the showpiece kitchen, which boasts a Falcon freestanding oven; a second wall oven, 40mm stone benches; extensive draws and an expansive butler's pantry. Nothing has been

**\$850,000-\$890,000**

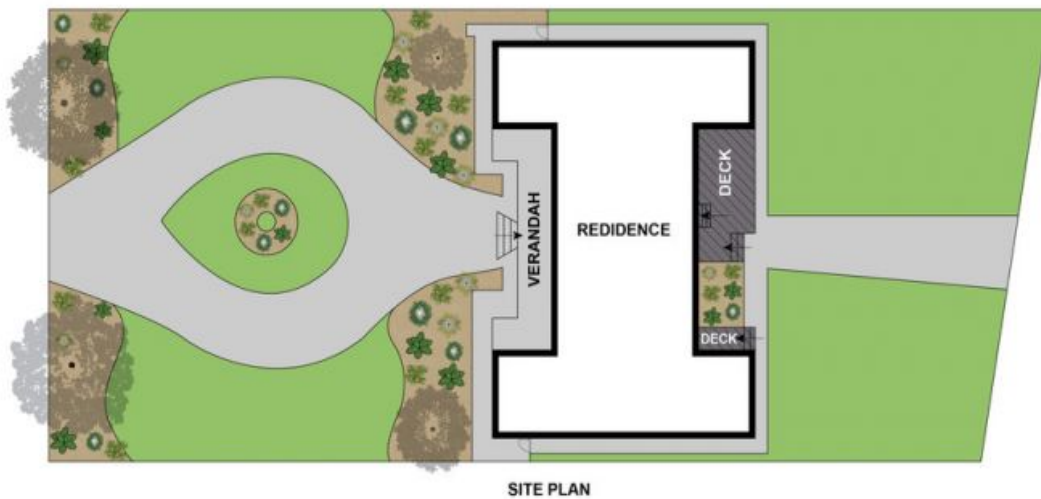
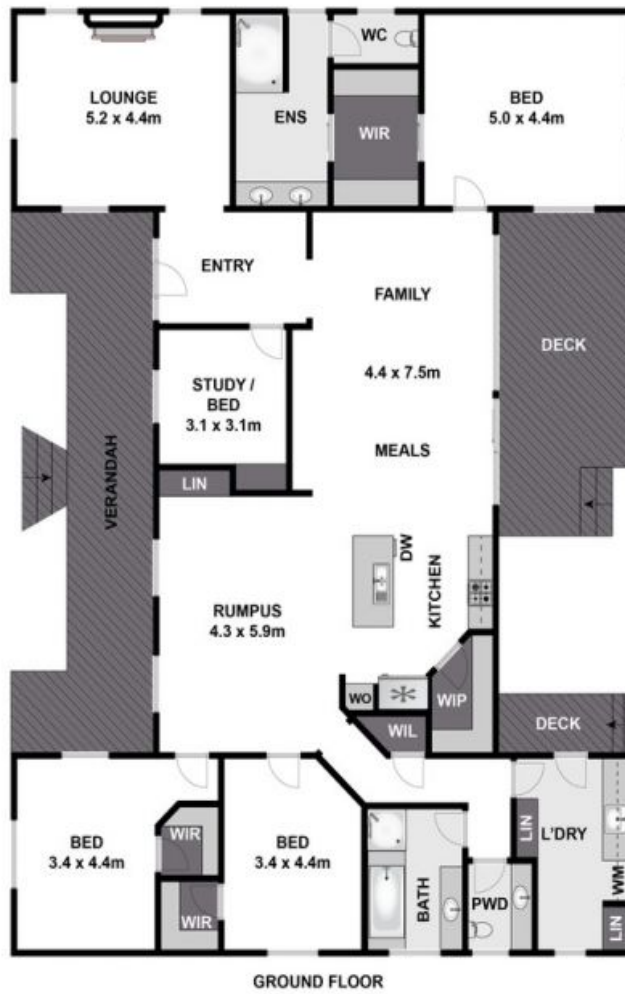
**View:** Sat, 29 Feb 2020 @12:30 pm - 1:00 pm

**Contact:** Nathan Ashton  
0418 566 708

**Type:** House

**Land:** 1427m<sup>2</sup>

<https://www.gartland.com.au>



Approx House Area 242m<sup>2</sup>  
 Approx Land Area 1426m<sup>2</sup>

Whilst [www.com.au](http://www.com.au) has made every attempt to ensure the accuracy of the floor plan contained here, measurements are approximate and no responsibility is taken for any error, omission, or mis-statement. This plan is for illustrative purposes only.



## 14A Moss Road, Leopold

**GARTLAND**  
 PROPERTY

Plans shown are only indicative of layout. Dimensions are approximate.

**Leopold, VIC**  
 14A Moss Road