



GARTLAND PROPERTY

NOTICE OF ENTRY

Health and wellbeing of our clients, team and community is our priority

Please do not enter the property if you have:

- Have had contact with someone suspected or confirmed with COVID-19
- Are experiencing cold or flu like symptoms
- Recently returned from overseas in the past 14 days

We ask that you please:

- Use the hand Sanitiser provided
- Do not touch furniture, fixtures, fittings and any surfaces
- Respect the social distancing requirements, keeping 1.5m away from other people.



North Geelong, VIC
6/36-38 Saunders Street

GARTLAND
PROPERTY

Well located Industrial warehouse in Saunders Street North Geelong, be quick this will not last long. Easy access back into Geelong and the Princess Highway back to Melbourne. The shed appears as new with a mezzanine level for extra storage. Situated in a small and tightly held complex.

Features:

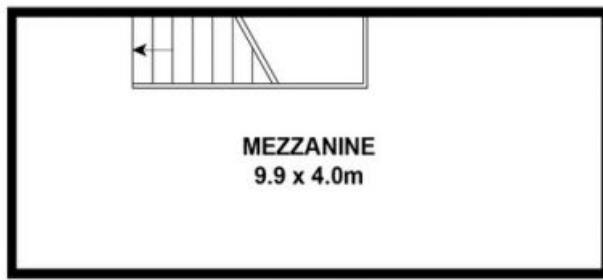
- . Building Area: 180m2 approx
- . Roller Door
- . Car Parking
- . Toilets & kitchenette
- . Mezzanine Level
- . Zoning: Industrial 2

LEASED

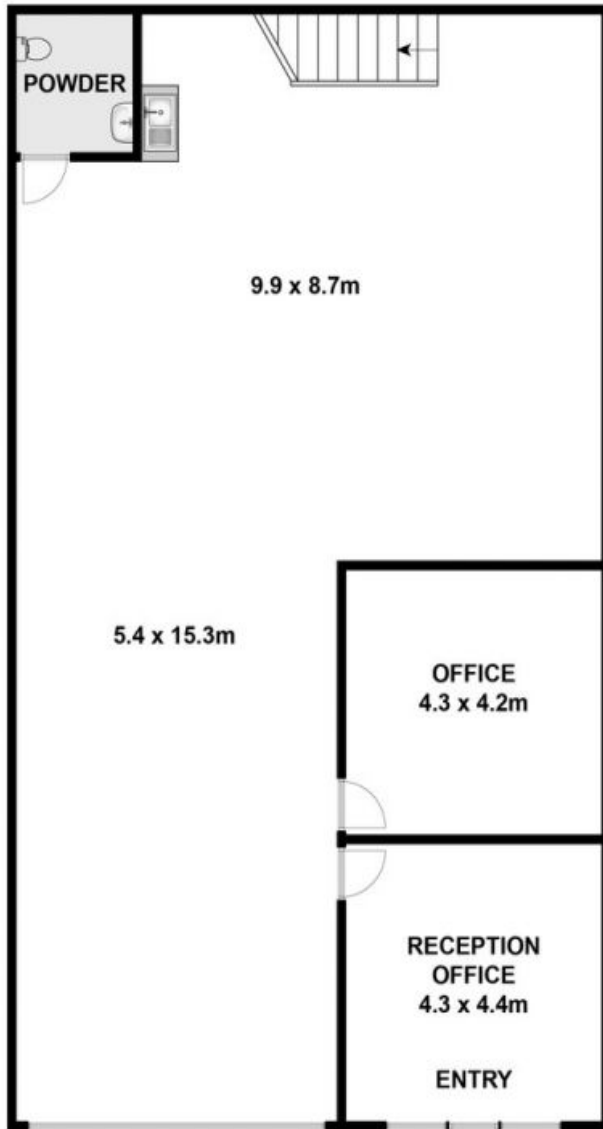
Contact: Michael De Stefano
0401 444 118

Type: Industrial

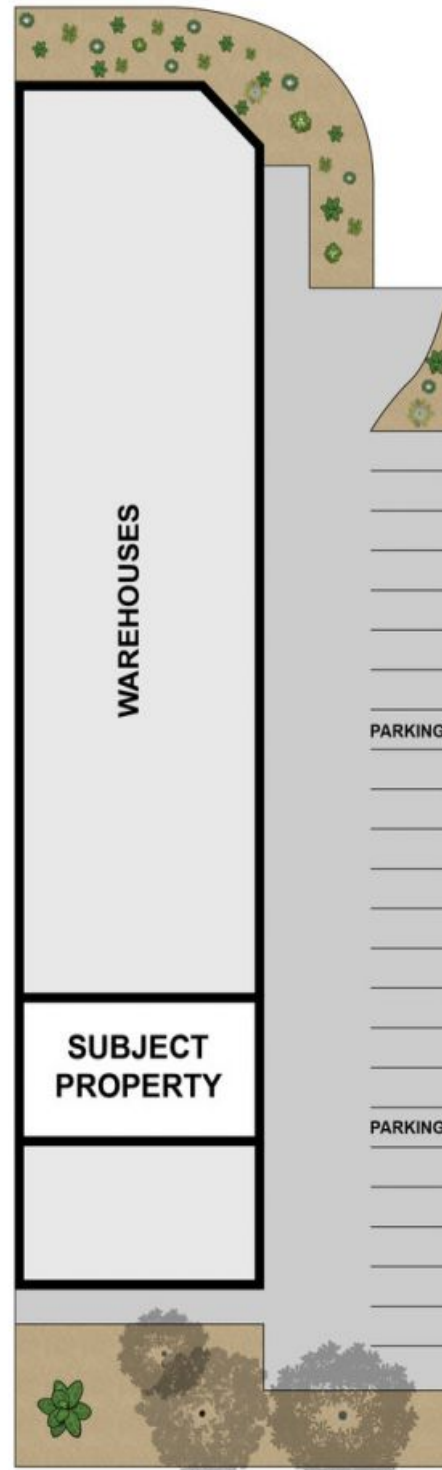
<https://www.gartland.com.au>



FIRST FLOOR



GROUND FLOOR



SITE PLAN

Approx. Area 179m²

While berrm.com.au has made every attempt to ensure the accuracy of the floor plan contained here, measurements are approximate and no responsibility is taken for any error, omission, or mis-statement. This plan is for illustrative purposes only.



6/36 Saunders Street, North Geelong

GARTLAND
PROPERTY

Plans shown are only indicative of layout. Dimensions are approximate.

North Geelong, VIC
6/36-38 Saunders Street