



GARTLAND PROPERTY NOTICE OF ENTRY

Health and wellbeing of our clients, team and community is our priority

Please do not enter the property if you have:

- Have had contact with someone suspected or confirmed with COVID-19
- Are experiencing cold or flu like symptoms
- Recently returned from overseas in the past 14 days

We ask that you please:

- Use the hand Sanitiser provided
- Do not touch furniture, fixtures, fittings and any surfaces
- Respect the social distancing requirements, keeping 1.5m away from other people.



Breakwater, VIC
4/21 Tucker Street

2 BED **1** BATH

GARTLAND
PROPERTY

\$270,000 - \$295,000

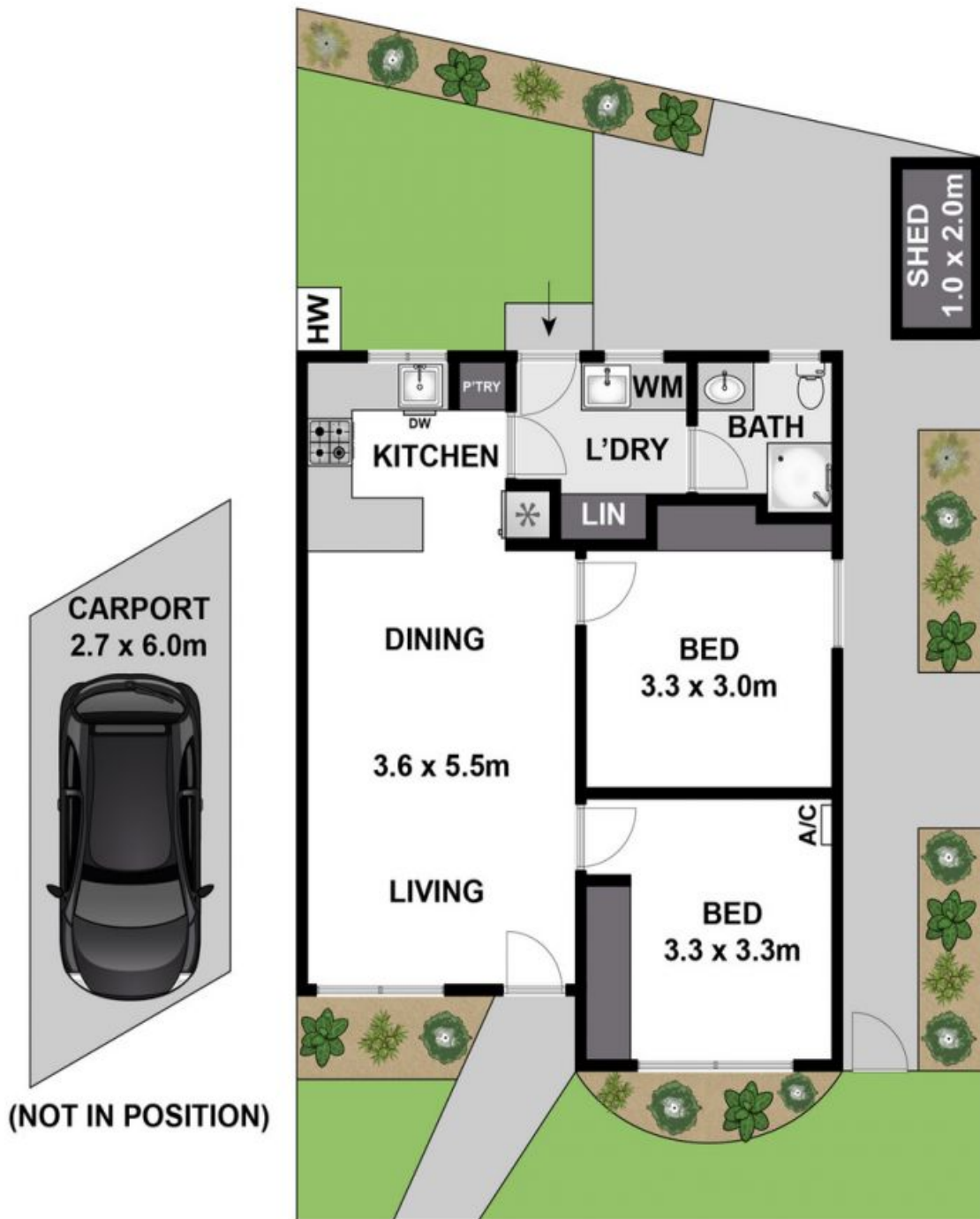
Contact: Nathan Ashton
0418 566 708

Type: Unit

<https://www.gartland.com.au>

Renovated, updated and extremely comfortable; this 2-bedroom unit is the perfect start, comfortable downsizer, or exceptional investment. Positioned perfectly to give you easy access to the City, Bellarine and Surf Coast; the property is the ideal mix of location and accessibility. The unit has been beautifully refurbished including a generous updated kitchen with dishwasher and excellent storage; fully renovated bathroom & laundry; 2 spacious bedrooms with BIR's & a split system to the master; and an overall open plan designs that maximises space and natural light. The rear courtyard is maintenance free and offers plenty of space for a BBQ, table and chairs.

Potential rental return \$260 - \$270 per week. If you have a residential investment property and wish to obtain an update on market conditions, ways in which you can achieve a more viable return or you simply wish to consolidate a portfolio, please don't hesitate to contact Emily Reid on 0411 497 783 to discuss in more detail.



Approx House Area 58m²
Approx Land Area 136m²

Whilst bwm.com.au has made every attempt to ensure the accuracy of the floor plan contained here, measurements are approximate and no responsibility is taken for any error, omission, or mis-statement. This plan is for illustrative purposes only.



4/21 Tucker Street, Breakwater

GARTLAND
PROPERTY

Plans shown are only indicative of layout. Dimensions are approximate.

Breakwater, VIC
4/21 Tucker Street