



Bannockburn, VIC
17 Willowbrae Way

3
BED

2
BATH

2
CAR

GARTLAND
PROPERTY

This wonderful family home sits on an elevated block capturing treetops and the creek below. It's walking distance to all amenities on offer in the growing township of Bannockburn and has excellent access to highways for easy access to Geelong, Ballarat and the Surf Coast.

The 3-bedroom Hamlan Home was built in 2018 truly is a gem, and from the moment you step in the front door you'll find yourself in love with the space and light. , particularly in the main lounge. The master bedroom includes a walk-in robe and ensuite and there is hallway access to a family bathroom as well as the second and third bedrooms, both with BIR's. A lovely open-plan room is used as a study and rumpus room, with practical and attractive built-in-shelving and worktable. Through to the back of the home is the family dining and living space which is overlooked by a pleasingly practical kitchen with its central bench, large fridge cavity and fantastic walk-in-pantry. An elevated north-east facing merbau deck and pergola is a private outdoor area accessed by double sliding-doors

from the dining area with picturesque

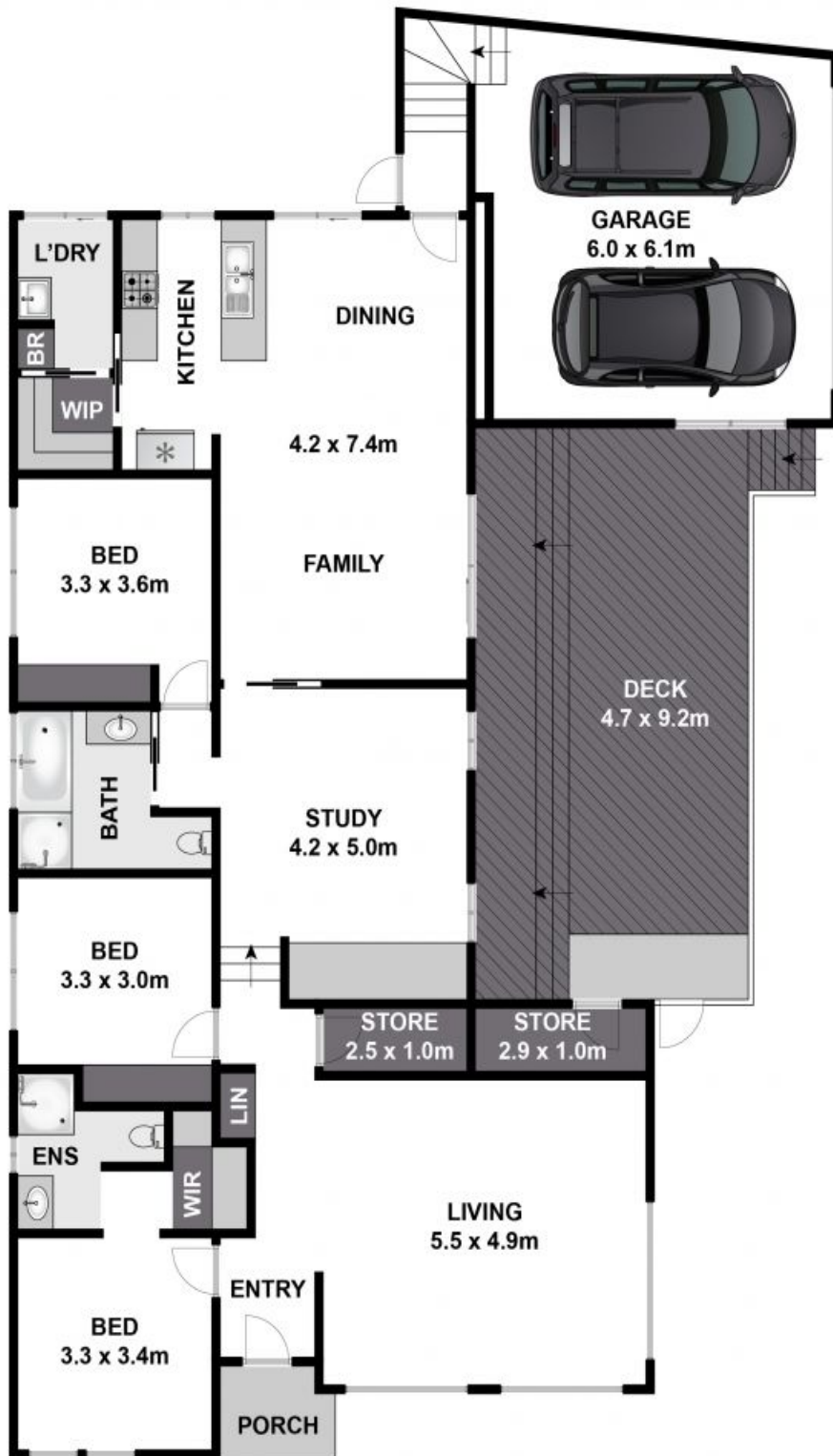
SOLD

Contact: Seka Powell
0409 235 245

Type: House

Sold Date: 19/06/2020

<https://www.gartland.com.au>



Approx House Area 212m²

While www.bwrm.com.au has made every attempt to ensure the accuracy of the floor plan contained here, measurements are approximate and no responsibility is taken for any error, omission, or mis-statement. This plan is for illustrative purposes only.



17 Willowbrae Way, Bannockburn

GARTLAND
PROPERTY

Plans shown are only indicative of layout. Dimensions are approximate.

Bannockburn, VIC
17 Willowbrae Way